



10 Year Guarantee
On Sanders workmanship



Made in NZ
Using NZ timber supplies

1975
40+ Years Experience
In business since 1975



Professional Install
Available NZ wide



Nationwide Delivery
Available NZ wide



Custom Design & Build
Designed for your space

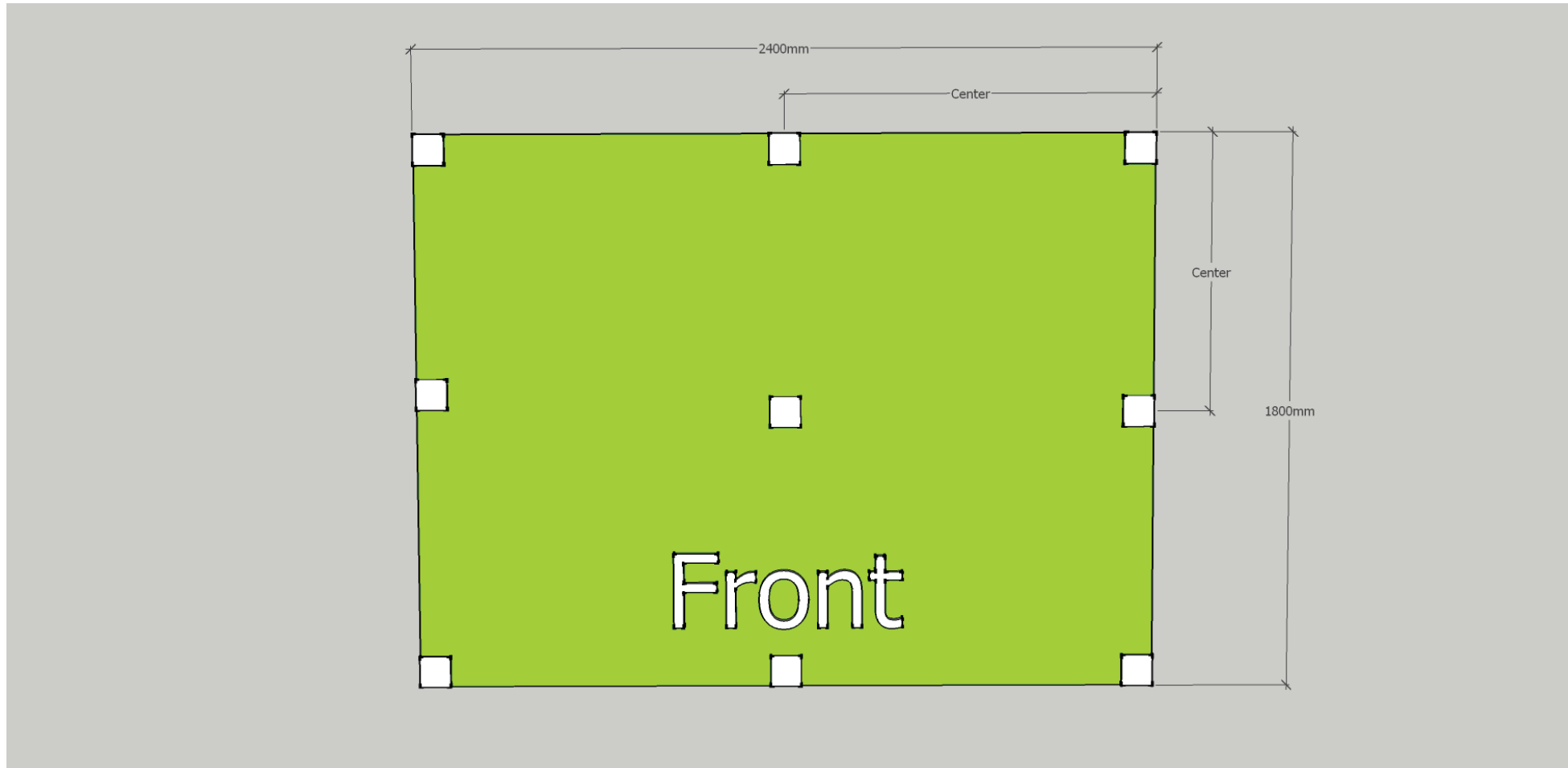


Full Lining Packages
Power, insulation & lining

Contents

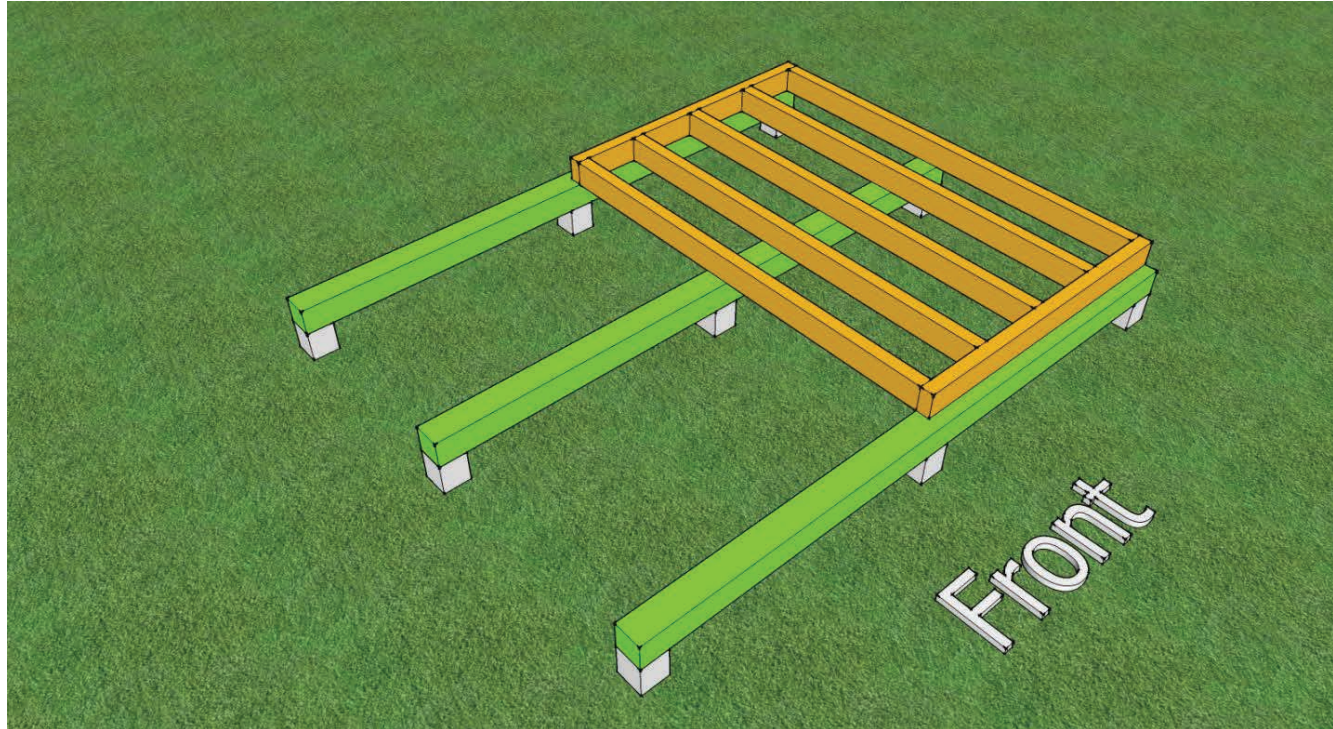
Foundations	3
Sub Floor	4
Floor and Deck	5
Walls	6
Roof Framing	7
Roof	8
Flashings	9
Doors and Window	10
Tools Required	11

Foundations



1. Set out piles according to the pile diagram above. The area in green is the shed. When location of piles has been established dig pile holes approximately 300 X 300 X 300.
2. Concrete in the piles making sure they are plumb, in line with each other and **SQUARE**.
3. Once the concrete has set use your straight edge and level to mark the height of the piles.
4. Cut piles to height.

Sub Floor

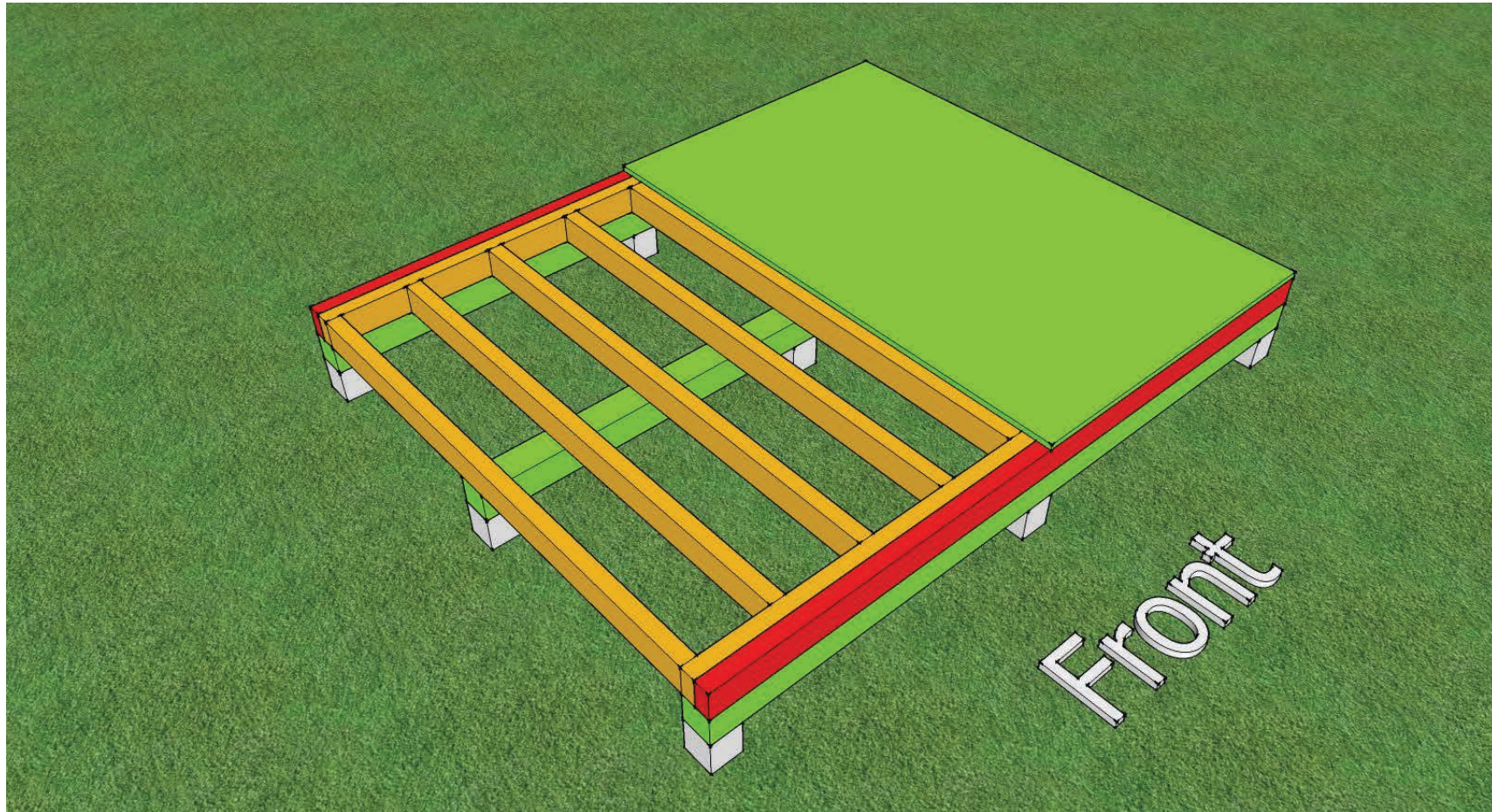


1. Lay the 100 X 100 ROUGH SAWN BEARERS across the piles and nail in place.
2. Begin laying the sub floor frames as shown above.

On Skids

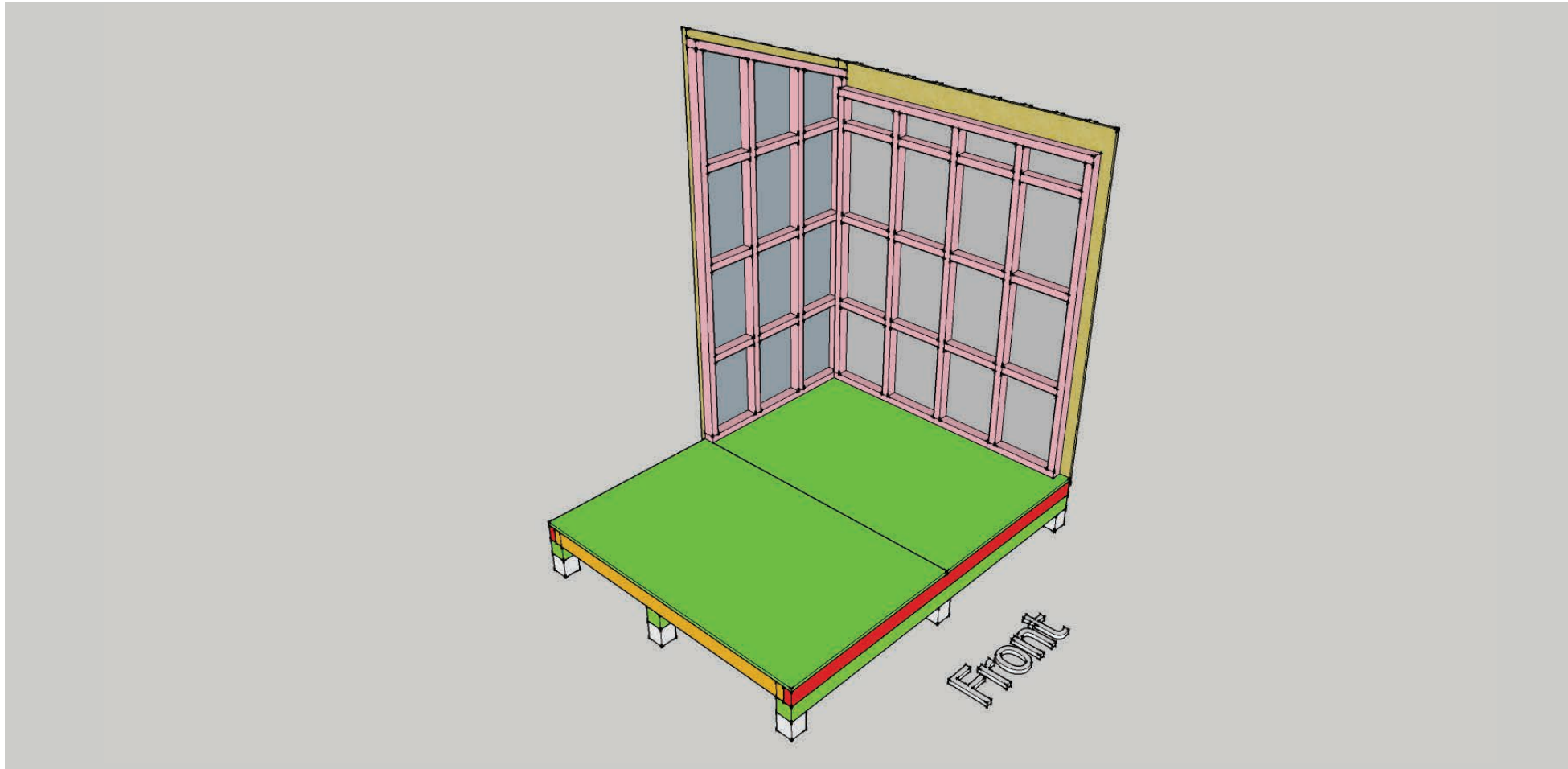
1. Lay the bearers directly on the ground.
2. Lay the sub floor framing on the skids/Bearers.
3. Level the sub floor framing one section at a time using a straight edge and level. Place blocks between the skids and the subfloor framing to support and level the frames.

Floor



1. When the sub floor framing has been laid and nailed together attach the 100 X 50 ROUGH SAWN BRACES to the front and back (Shown in red). **If the braces are not installed the sub floor will not be the correct size for the ply flooring.**
2. Nail the ply flooring to the sub floor.

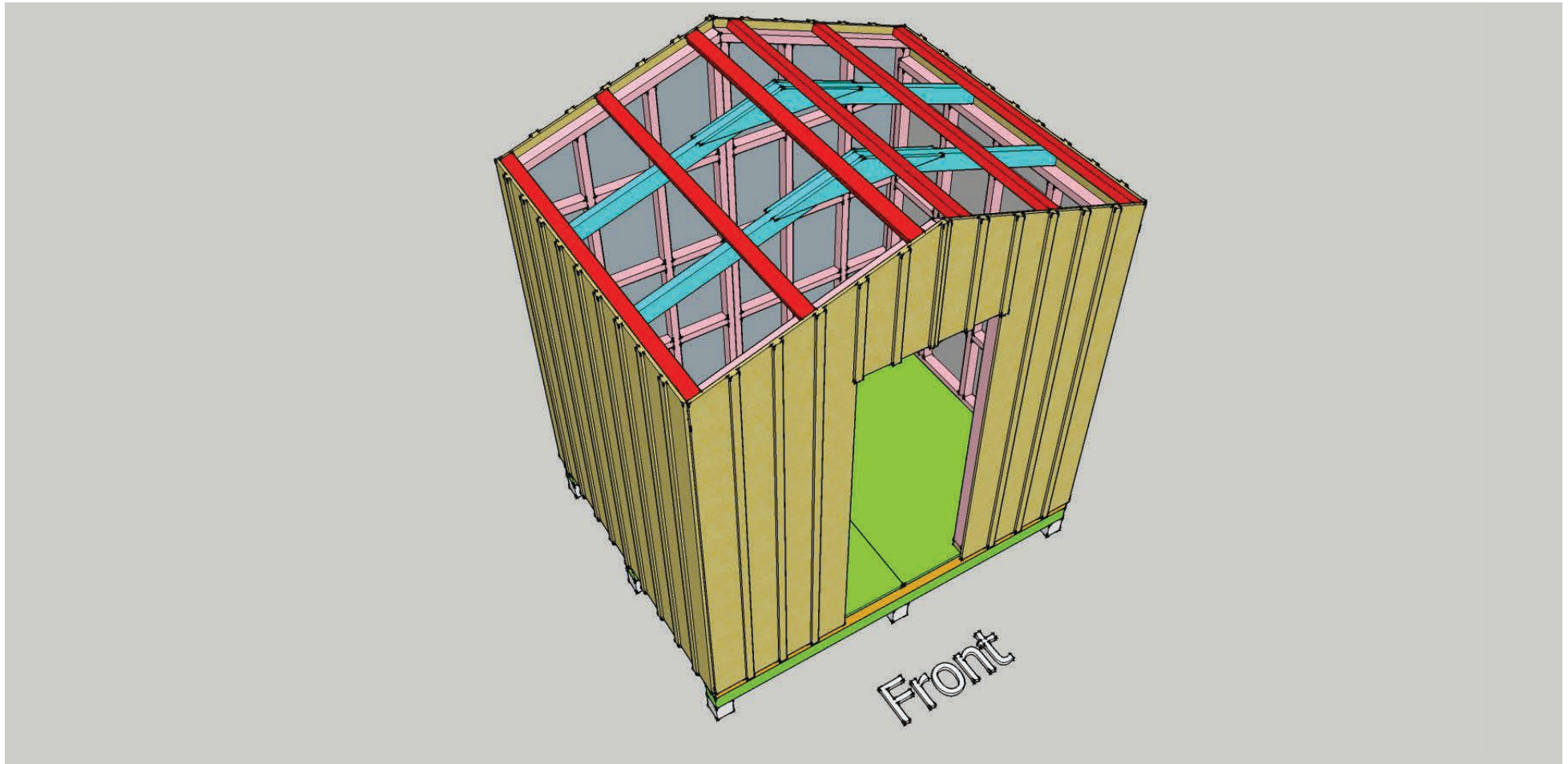
Walls



It is important to remember the walls can **only go together one way**. All panels are labelled and have an arrow indicating the top.

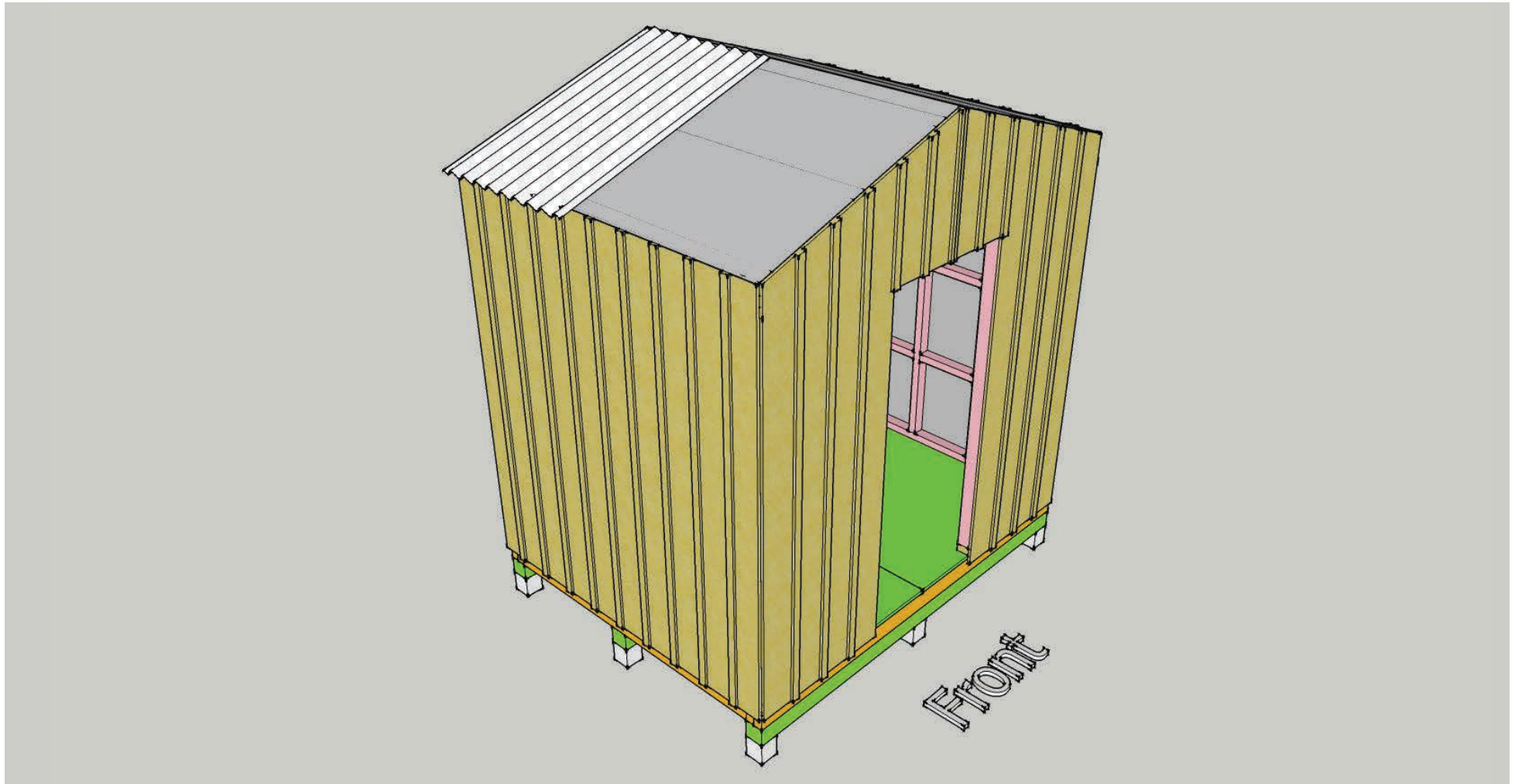
1. Attach two corner panels first to provide bracing. Join together and fix panels to floor with 10g 75mm BUGAL HEAD SCREWS.
2. Ensure that the building paper is pulled all the way out and is not trapped between the panels.

Roof Framing



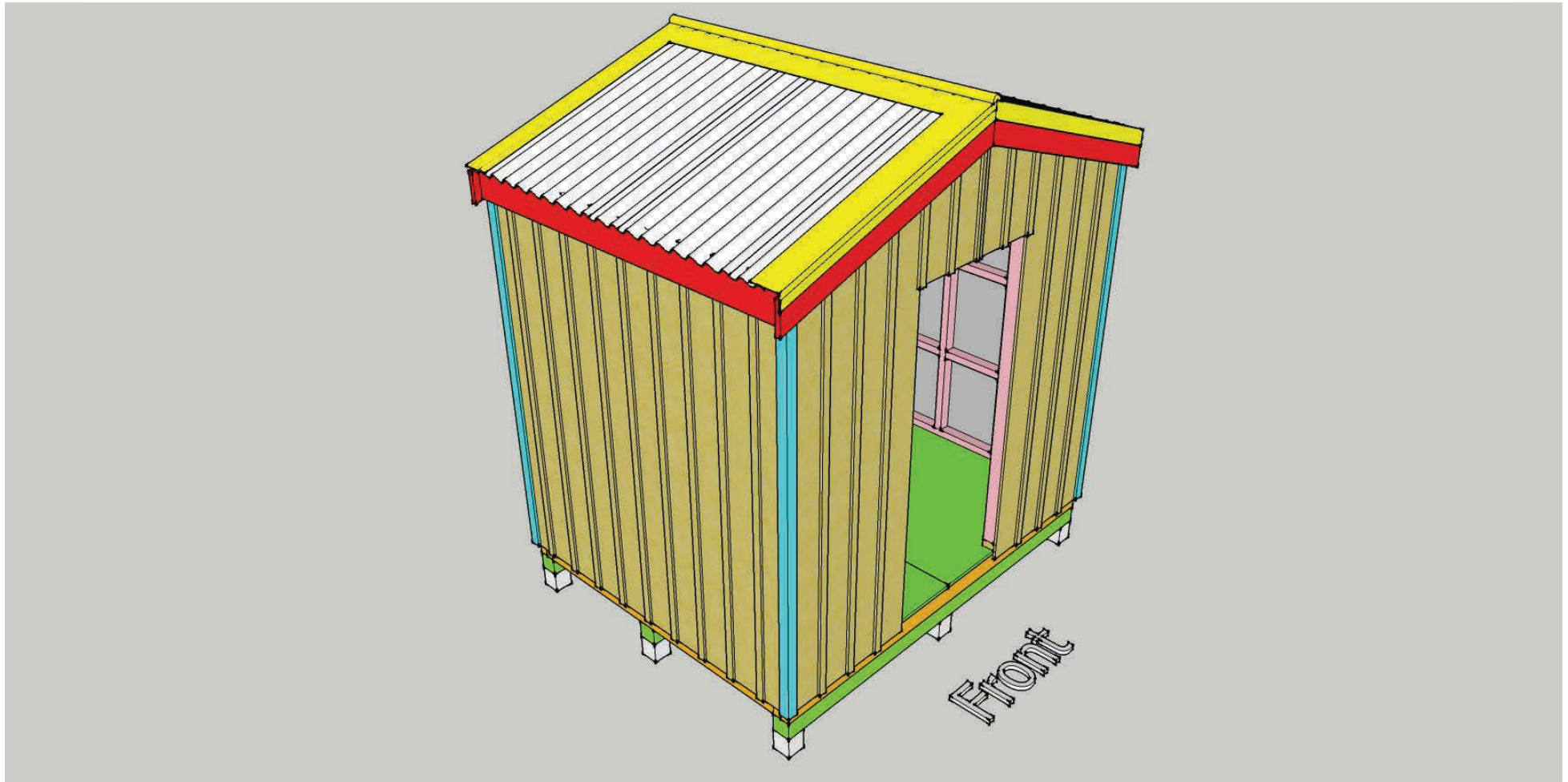
1. Space Truss (In blue) evenly and nail to top plate of exterior walls.
2. Attach 70 X 45 purlins to rafters (in red).

Roof



1. Lay roofing paper provided over the entire roof (in grey) allowing an overhang at the sides of the unit.
2. Lay in the roof.

Flashings



1. Fix corner battens x 4 (shown in blue).
2. Fix 150 X 25 ROUGH SAWN BARGES to the unit (shown in red). Do this on both sides, front and at the back of the unit.
3. Starting with the front and back barges first (in yellow above), cut and fix barge flashings.
4. When barge flashings have been fixed front and back attach the ridge cap.

Doors (and Window if provided)

1. Cut out the framing from the bottom of the door opening.
2. Remove the brace from the bottom of the door, insert door into opening and nail off.
3. The main door has a latch on the inside. Locate the latch and drill a hole in the top of the door frame so the door can lock.
4. Install the window making sure the front face of the window jamb is flush with the cladding.
5. Seal in the gap between the outside of the window jamb and the framing with silicone (not included)
6. Use the 90 X 30 PG DECKING down each side of the window to weatherproof

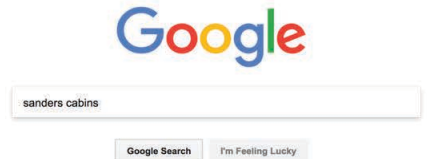
Tools Required

1. Spade
2. Straight Edge
3. Level
4. Chainsaw (optional)
5. Nail gun (optional)
6. Impact driver
7. Tec Screw Bit
8. 10g Hex bit
9. Drill
10. Skill saw
11. Hammer
12. Tape measure
13. Pencil
14. Square
15. 12mm Drill Bit
16. Chalk Line
17. String Line
18. LH Tin snips
19. RH Tin snips
20. Sliding Bevel

Review our products on Google:

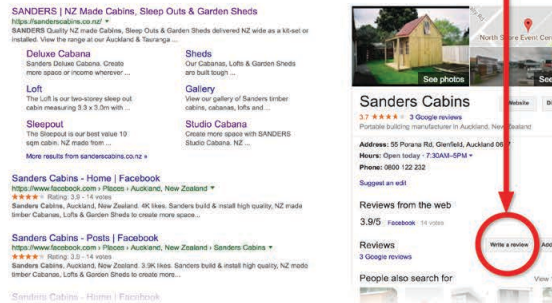
1

Search 'Sanders Cabins' on Google:



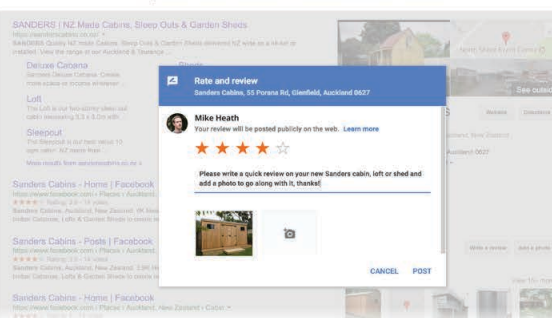
2

On the results page, click the 'Write a review' button on the Sanders Cabins business listing:



3

Give us a star rating, write a review and post a photo of your new Sanders cabin, loft or shed!



4

Thanks, from the team at Sanders!